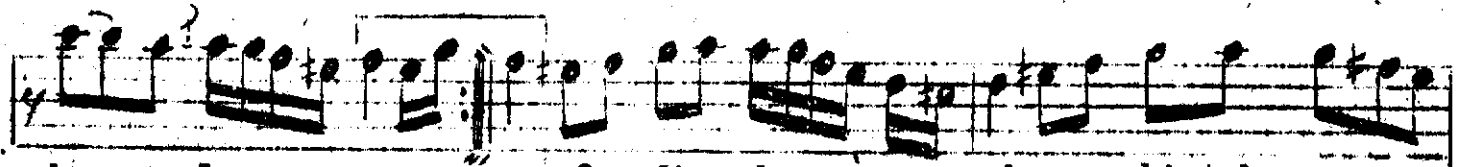
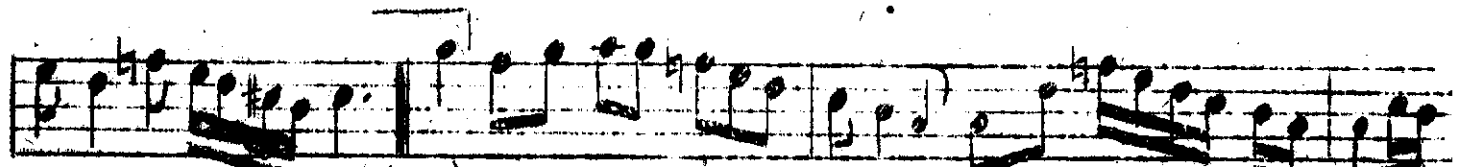


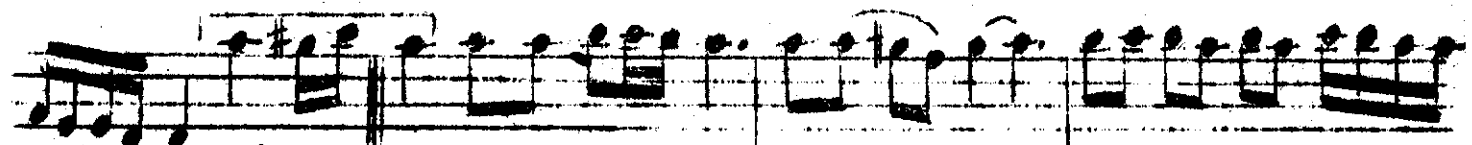
Çev ri lir ba şı ma cihan dar o lur



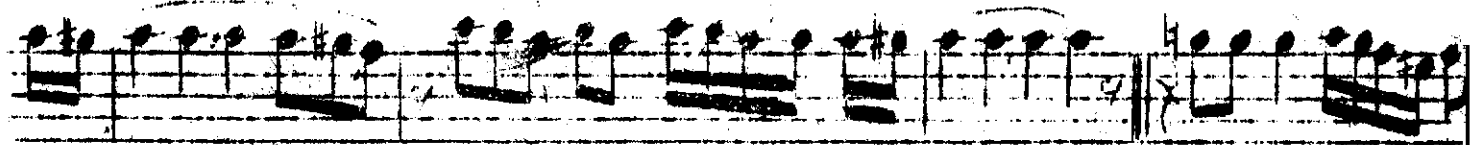
dar o lur —SHL— e fen dim den ba na hi tab



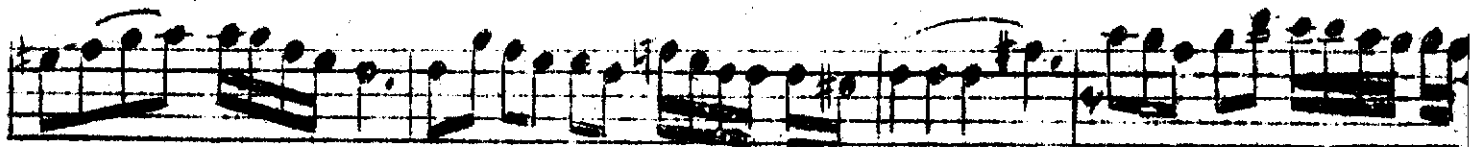
o lun oa (SAL) e fen dim den ba na hi tab o lun



ca - S 2 - bul bul gi bi i şim a hüzar



o lur zar o lur bülbulgi bi



i şim a hüzar o' lur zar

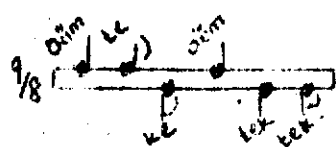


lur -SAL- gülyü zün de nef i nikab olun oa.



(S4)

gülyü zün de nef i ni ka b o lun oa



Çevrilir başıma cihan dar olur
Efendimden bana hitab olunca.
Bulbul gîti isim ahızar olur
Gül yüzünde nef-i nîkâb olunca.